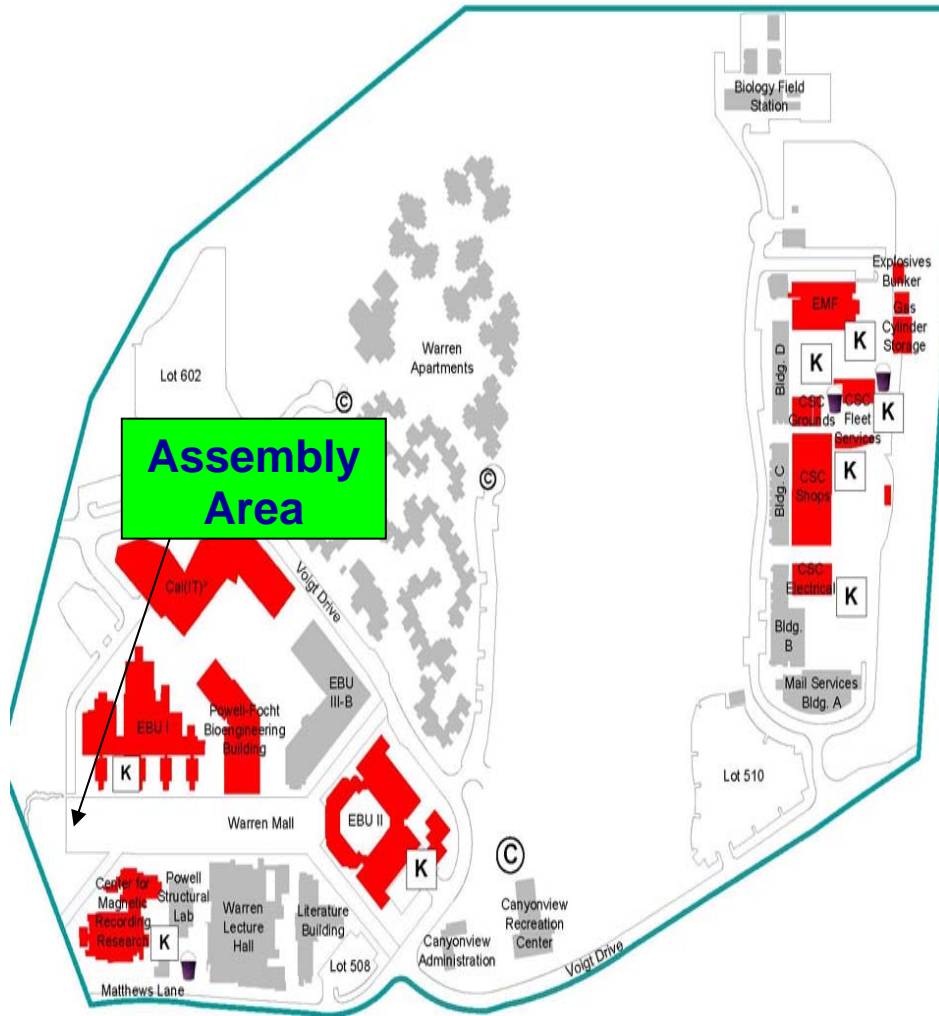
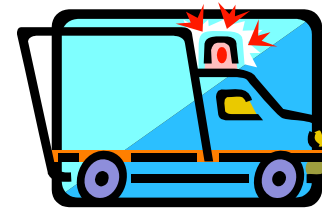


EMERGENCY ASSEMBLY AREA & SUPPLY CONTAINERS








Emergency Action Plan



Electrical & Computer Engineering Engineering Building – Unit 1

For a copy of the Emergency Action Plan, go to the following website:
https://necesis.ucsd.edu/sec-utilities/ECE_EmergencyActionPlan_Jan07.pdf.

UCSD Emergency Status Website:
<http://blink.ucsd.edu/Blink/External/Topics/Policy/0,1162,2907,00.htm>

	= Spill Kit		= Hazardous Waste Materials Used
	= Knox Box		= EH&S Emergency Supply Container
	= Housing Emergency Supply Container		

Emergency Phone Numbers

Police, Medical, Fire534-HELP
Thornton Emergency Room..... 657-7600
Poison Control Center 800-876-4766
UCSD Emergency Status. 888-308-8273

When calling 911, calmly state:

- Your name, Building and Room location of emergency
- Nature of the emergency: fire, chemical spill, etc.
- Injuries?
- Hazards present which may affect responding emergency personnel
- A phone number near the scene where you can be reached

ECE Dept. Contact List:

****Emergency Personnel to meet ECE contact in the general assembly area in front of the “Snake Path” at the West end of the Warren Mall (see attached map).**

For emergencies in Academic space, contact:

1. Paul Yu, Chair – x44687, yu@ece.ucsd.edu
2. Jan Cox, MSO – x46547, jcox@ece.ucsd.edu
3. Edgar Hodge, Comp. Mgr. – x43999, ehodge@ece.ucsd.edu
4. Jessica Lovci, Safety – x24779, jlovci@ece.ucsd.edu

For emergencies in Lab space, contact:

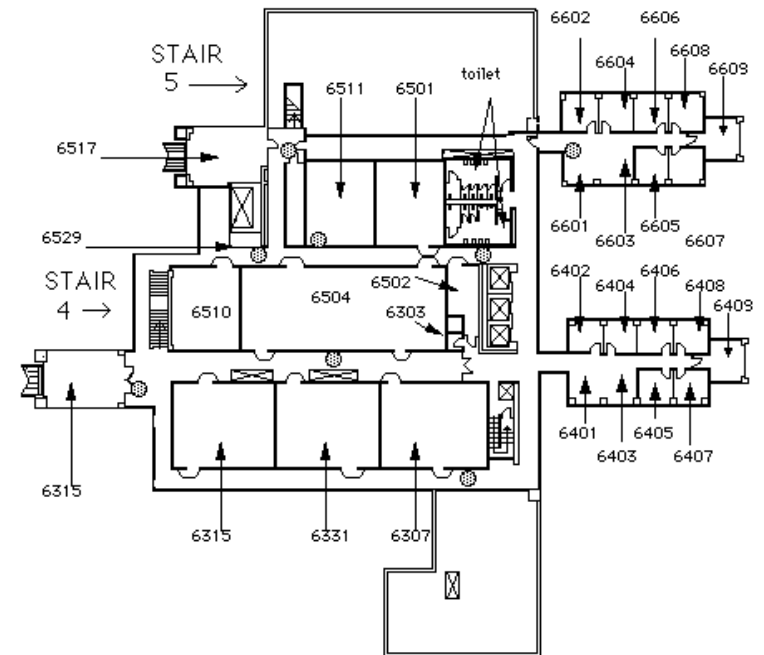
Contact the Lab Safety Officer for that lab (EH&S and Campus Police will receive an updated lab safety officer list, and an updated combination lock list, semi-annually from Jessica Lovci, x24779).

Location of Emergency Items & Places:

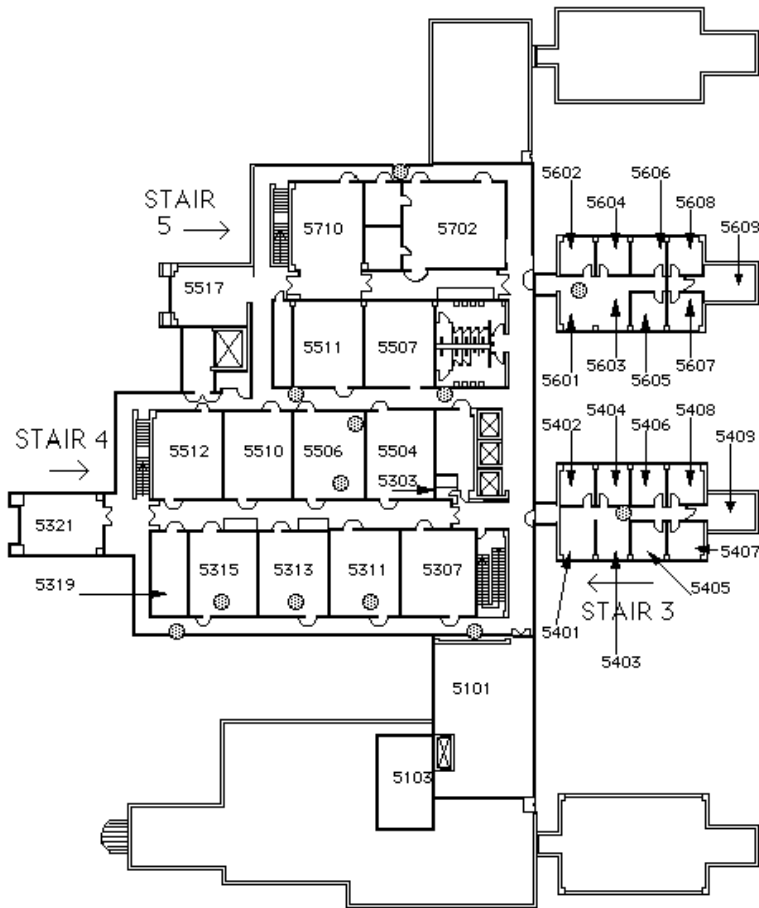
****It is your responsibility to know these locations before an emergency occurs.**

- **Stairwells:** See the attached Floor Plans.
- **Fire Extinguishers:** They are shown as a filled-in circle on the attached Floor Plans.
- **Meeting Area:** Directly in front of the “Snake Path” at the North end of Warren Mall. See attached map.
- **Survival Packs / First Aid Kits:** Located in each of the office pods. Ask your Area Coordinator for its location in your pod.
- **Pay Phones:** Located outside the main entrance of the building.
- **Tools that may be used for Rescue Or Recovery:**
Electronics Shop EBU2 Room 328L Office: 534-6440
EBU1 Room 3337 Office: 534-2038

EBU-1 6th Floor



**EBU-1
5th Floor**



⊙ = Fire Extinguisher location

BUILDING EVACUATION

- Quickly move to the outside of the building using the nearest door marked with an EXIT sign.
- Close and secure all doors as you leave. Take your keys with you.
- **DO NOT USE ELEVATORS.** Proceed to the nearest safe stairway (See attached Floor Plans for stairway locations. It is your responsibility to know their location before an emergency occurs).
- Be certain all persons in the area are evacuated immediately.
- Help those who need special assistance—disabled, small children, etc.
- Report immediately to the designated assembly area directly in front of the “Snake Path” at the North end of Warren Mall (See attached map). **DO NOT STAND NEXT TO EBU-1 BUILDING.**
- Wait for instructions from emergency response personnel.
- In the case of a catastrophic event, report immediately to the closest Supply Container behind the CanyonView pool. (See attached map).

FIRE PROCEDURES - IN CASE OF SMALL FIRE

- Pull the fire alarm & call Campus Police at 534-HELP.
- IF YOU HAVE BEEN TRAINED to use a fire extinguisher, while keeping an exit available behind you, bring the extinguisher within six feet of the fire. (See attached Floor Plans for Fire Extinguisher locations. It is your responsibility to know their location before an emergency occurs)
- Pull the pin located in the extinguisher’s handle and aim the nozzle at the base of the fire.
- Squeeze the handles and sweep from side to side at the base of the fire until it is out.

IN CASE OF LARGE FIRE

- Pull the fire alarm & call Campus Police at 534-HELP. Alert people in the area to begin evacuation using the stairs--not the elevators.
- Close door to confine the fire.
- Move to your designated assembly area upwind from the building.
- Have persons knowledgeable about the incident and location assist emergency personnel.

EARTHQUAKES

DURING HEAVY SHAKING

- Get under a desk, table, door arch or stairwell. If none are available, move against an interior wall and cover your head with your arms. Remain under cover until the movement subsides.
- Stay away from large windows, shelving systems or tall room partitions.
- After shaking has stopped, survey your immediate area for trapped or injured persons and ruptured utilities. Evacuate the building using the stairs—not the elevators. Move to your designated assembly area and await further instructions from emergency personnel.

BOMB THREATS

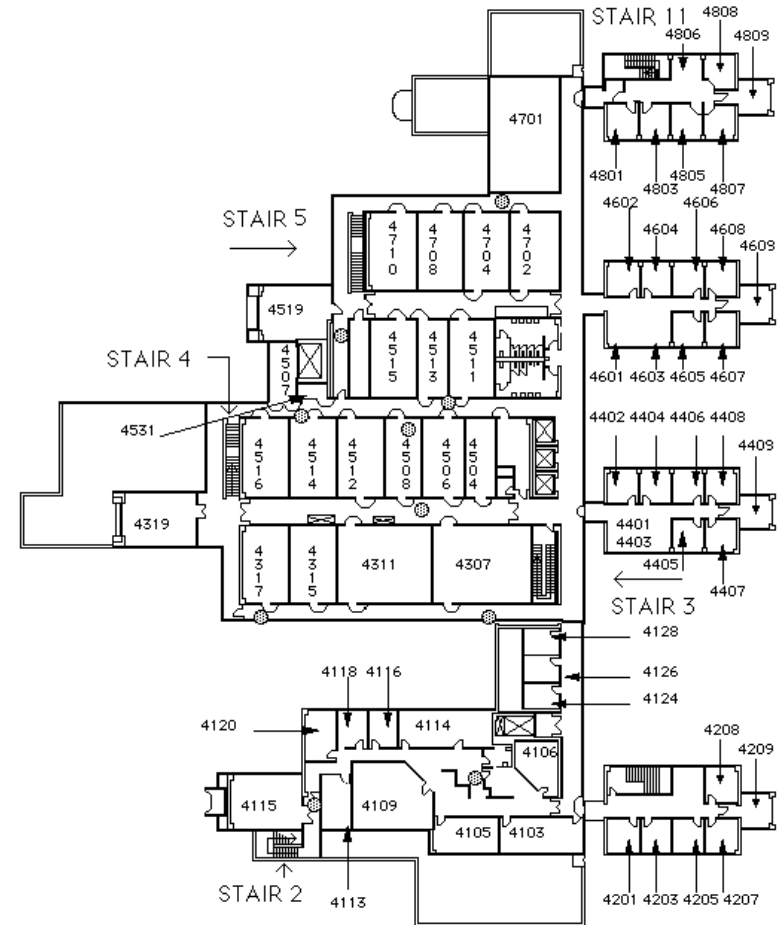
IF A BOMB-THREAT IS RECEIVED:

- Do not search for an explosive device.
- Do not touch any unusual or suspicious objects. A list of characteristics of suspicious packages is posted in the mailroom on the cabinet left of the mailboxes. Refer to the following site: <http://blink.ucsd.edu/Blink/External/Topics/Policy/0,1162,3107,00.html>
- Building Coordinators should report the threat to campus police immediately.

IF YOU RECEIVE A BOMB-THREAT CALL:

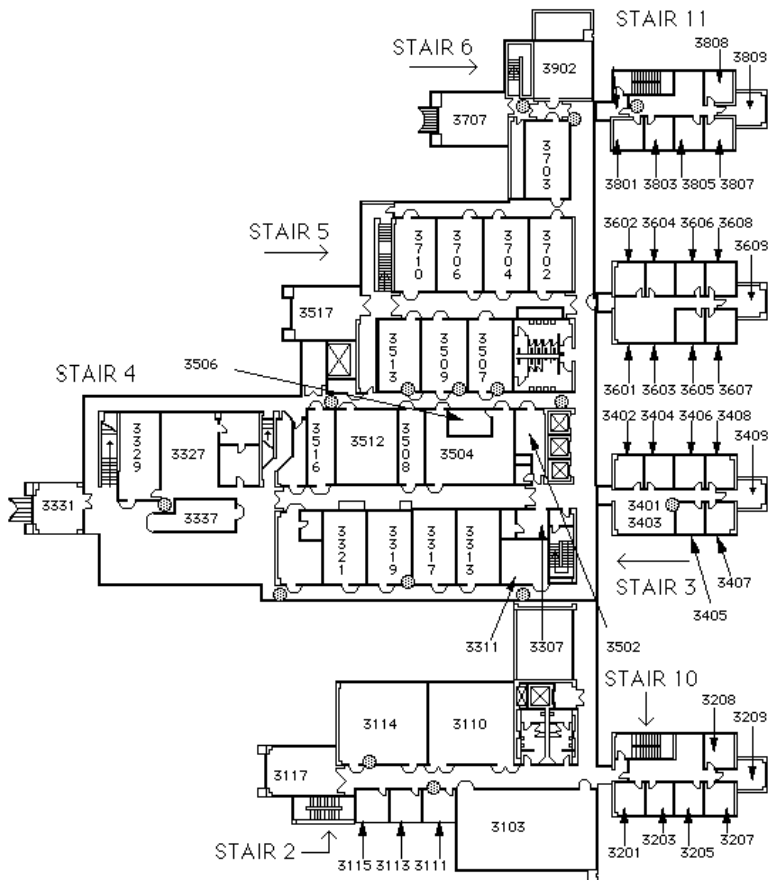
- Record the time of call.
- Try to ask:
 1. When will the bombs go off?
 2. Where is it?
 3. What does it look like?
 4. Why was it placed in the building?
 5. Who is calling?
- Try to notice:
 1. Caller's gender
 2. Approximate age
 3. Was the voice familiar?
 4. Did the person have an accent or unique speech attribute?
 5. Any unique background noises?

EBU-1 4th Floor



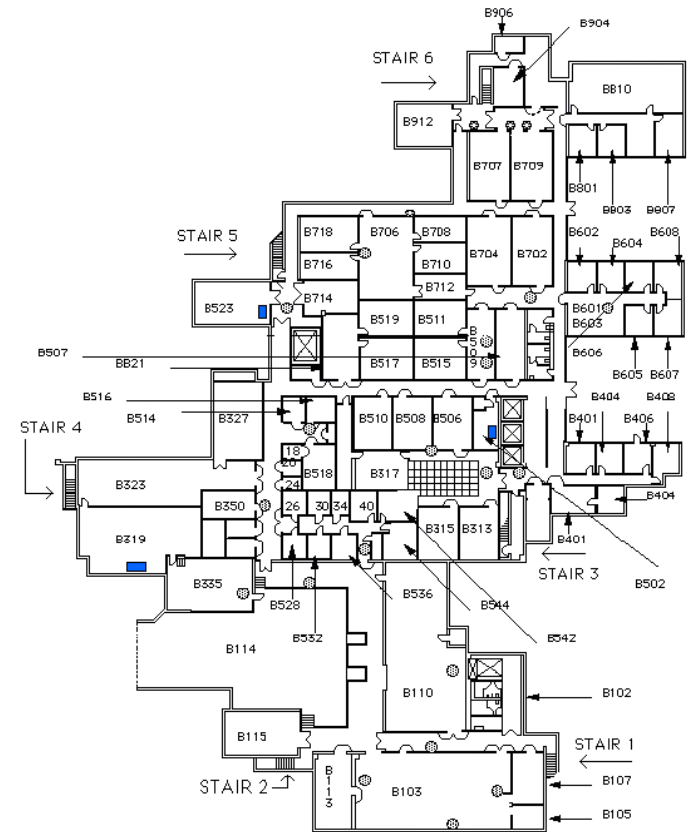
● = Fire Extinguisher location

**EBU-1
3rd Floor**



⊗ = Fire Extinguisher location

**EBU-1
Basement**



⊗ = Fire Extinguisher location

